

## REVIEW ARTICLE

## MECHANISMS OF DISEASE

## Major Depressive Disorder

R.H. Belmaker, M.D., and Galila Agam, Ph.D.

DEPRESSION IS RELATED TO THE NORMAL EMOTIONS OF SADNESS AND bereavement, but it does not remit when the external cause of these emotions dissipates, and it is disproportionate to their cause. Classic severe states of depression often have no external precipitating cause. It is difficult, however, to draw clear distinctions between depressions with and those without psychosocial precipitating events.<sup>1</sup> The diagnosis of major depressive disorder requires a distinct change of mood, characterized by sadness or irritability and accompanied by at least several psychophysiological changes, such as disturbances in sleep, appetite, or sexual desire; constipation; loss of the ability to experience pleasure in work or with friends; crying; suicidal thoughts; and slowing of speech and action. These changes must last a minimum of 2 weeks and interfere considerably with work and family relations. On the basis of this broad definition, the lifetime incidence of depression in the United States is more than 12% in men and 20% in women.<sup>2</sup> Some have advocated a much narrower definition of severe depression, which they call melancholia or vital depression.<sup>3</sup>

A small percentage of patients with major depression have had or will have manic episodes consisting of hyperactivity, euphoria, and an increase in pleasure seeking. Although some pathogenetic mechanisms in these cases and in cases of major depressive disorder overlap, a history of mania defines a distinct illness termed bipolar disorder.<sup>4</sup>

Depression is a heterogeneous disorder with a highly variable course, an inconsistent response to treatment, and no established mechanism. This review presents the major current approaches to understanding the biologic mechanisms of major depression.

## GENETICS

Studies comparing concordance rates for major depression between monozygotic and dizygotic twins suggest a heritability of about 37%,<sup>5</sup> which is much lower than the heritability of bipolar disorder or schizophrenia. Some aspects of the normal personality, such as avoidance of harm, anxiousness, and pessimism, are also partly heritable.<sup>6</sup> Kendler et al.<sup>7</sup> showed that although depression is due in part to heritable depression-prone personality traits, it is also the result of heritable factors that are independent of personality. Early-onset, severe, and recurrent depression may have a higher heritability than other forms of depression.<sup>8</sup> It is clear from studies of families that major depression is not caused by any single gene but is a disease with complex genetic features. Studies of pedigrees with multiple cases of major depression have identified chromosomal regions with linkage to the disorder, and some of these loci have been replicated in more than one study, although no single chromosomal region has been replicated in every family study of genetic linkage in depression. Holmans et al.<sup>9</sup> found

From Ben Gurion University of the Negev, Beersheba, Israel. Address reprint requests to Dr. Belmaker at Beersheba Mental Health Center, P.O. Box 4600, Beersheba, Israel, or at belmaker@bgu.ac.il.

N Engl J Med 2008;358:55-68.

Copyright © 2008 Massachusetts Medical Society.

evidence of linkage of recurrent, early-onset depression to chromosome 15q25-q26, but the population attributable risk was small.

No specific molecular risk factor has been reliably identified. One common polymorphic variant of the serotonin-transporter-linked polymorphic region (5-HTTLPR), which affects the promoter of the serotonin-transporter gene, causes reduced uptake of the neurotransmitter serotonin into the presynaptic cells in the brain.<sup>10</sup> Some studies have shown that this polymorphism confers a predisposition to depression,<sup>11</sup> but it also confers a predisposition to an anxious and pessimistic personality.<sup>10</sup> Brain imaging reveals functional differences in emotion-related areas of the brain among carriers of the different common polymorphisms of 5-HTTLPR,<sup>12</sup> although a direct relation to depression is unclear. In a large, prospective epidemiologic study, Caspi et al.<sup>13</sup> found that 5-HTTLPR predicted depression only in association with defined life stresses. Some environmental factors could confer a predisposition to depression by affecting the genome epigenetically — for example, increased maternal care in rodents causes an epigenetic change in the promoter region of the glucocorticoid-receptor gene.<sup>14</sup>

---

#### THE MONOAMINE-DEFICIENCY HYPOTHESIS

---

The noradrenergic and serotonergic systems originate deep in the brain and fan out over almost the entire brain, suggesting a system capable of modulating many areas of feeling, thinking, and behaving. The early antidepressants blocked the reuptake of norepinephrine and serotonin by the presynaptic neuron. The immediate effects of this pharmacologic action are to increase the availability of norepinephrine and serotonin in the synapse and to increase stimulation of the postsynaptic neuron. Inhibitors of the enzyme monoamine oxidase were also discovered to have antidepressant properties. This enzyme catabolizes norepinephrine and serotonin in their respective presynaptic neurons, and such inhibition could be expected to increase the availability of neurotransmitters. These discoveries led to a major theory of depression known as the monoamine-deficiency hypothesis. Numerous studies of norepinephrine and serotonin metabolites in plasma, urine, and cerebrospinal fluid, as well as postmortem studies of the brains of patients with depression, have yet to identify the

purported deficiency reliably. However, a newly discovered form of the enzyme tryptophan hydroxylase, designated TPH-2, is specific to the brain<sup>15</sup> and could explain why previous postmortem studies of total enzyme activity did not show differences in tryptophan hydroxylase activity between patients with depression and controls.<sup>16</sup> A recent positron-emission tomographic study using a ligand for brain monoamine oxidase showed a 30% increase of the enzyme in a subgroup of patients with depression.<sup>17</sup> A study measuring differences in monoamine metabolites between the internal jugular vein and the brachial artery showed lower production by the brain of norepinephrine metabolites in patients with depression than in controls.<sup>18</sup> The monoamine-deficiency hypothesis continues to stimulate research whenever a new technical window into the brain is opened.

Serotonin and norepinephrine can be depleted experimentally in humans by oral treatments.<sup>19</sup> A drink containing all amino acids except tryptophan stimulates the liver to synthesize proteins and rapidly depletes the plasma (and therefore the brain) of tryptophan. Tryptophan is rate-limiting for serotonin synthesis in the brain. Such oral tryptophan depletion does not induce depression in healthy subjects but will cause a relapse of depression in patients who have been successfully treated with a serotonin-reuptake inhibitor.<sup>19</sup> Similarly,  $\alpha$ -methyl paratyrosine inhibits tyrosine hydroxylase, the rate-limiting step in catecholamine synthesis. Treatment with  $\alpha$ -methyl paratyrosine does not induce depression in normal subjects but will induce a relapse in patients who have been treated successfully with a norepinephrine-reuptake inhibitor.<sup>19</sup> These findings suggest that norepinephrine and serotonin have critical roles in the mechanisms of these treatments of depression but that additional neurochemical factors are necessary to cause depression.

Because direct measurements of monoamine neurotransmission did not yield definitive findings in relation to depression, the downstream effects of monoamine neurotransmission were explored (Fig. 1). The serotonin-1B receptor is located presynaptically and regulates the release of serotonin by feedback inhibition. Postmortem studies show that the levels of p11, a protein that enhances the efficiency of serotonin-1B receptor signaling, are decreased in the brains of patients with depression.<sup>20</sup> The serotonin-1A receptor is located both presynaptically and postsynaptically to regulate

serotonin function (Fig. 1). The receptor can be evaluated in patients with depression by injecting specific agonists and measuring specific neuroendocrine responses, such as elevation of the prolactin level.<sup>21</sup> Results suggest that the sensitivity of this receptor is reduced in patients with depression.<sup>21</sup> The  $\alpha_2$ -noradrenergic receptor, which is usually presynaptic, modulates norepinephrine release by feedback inhibition (Fig. 1). Heightened receptor sensitivity has been described in patients with depression,<sup>22</sup> which is consistent with reduced norepinephrine release.

It is conceivable that the second-messenger systems for serotonergic and noradrenergic neurotransmission malfunction in depression, and for this reason the phosphatidylinositol and cyclic AMP second-messenger systems have been extensively evaluated. Reduced inositol levels have been found in postmortem studies of the brains of persons who have died by suicide<sup>23</sup> and in magnetic resonance spectroscopic studies of the frontal cortex in patients with depression.<sup>24</sup> A blunted cyclic AMP response to stimulation was found in postmortem studies of the brains of patients with depression.<sup>25</sup> These reductions in second-messenger function may impair neurotransmitter function even without changes in monoamine levels or receptor numbers. These data indirectly support elaborations of the original monoamine-deficiency hypothesis of depression (Fig. 1).

G proteins that mediate signaling between receptors and second-messenger systems have also been investigated in patients with depression, both in postmortem studies of the brain<sup>26</sup> and in studies of peripheral-blood cells.<sup>27</sup> Although these systems are clearly affected, no consistent picture has emerged because there are numerous forms of G proteins that vary in different areas of the brain. The cyclic AMP response element-binding protein (CREB) is a transcription factor affected by cyclic AMP in the cell. In an animal model of depression, rats with overexpression of CREB in the dentate gyrus behaved similarly to rats treated with antidepressants, but the opposite effect was found when CREB was overexpressed in the nucleus accumbens.<sup>26,28</sup> Thus, the role of CREB in depression is specific to the region of the brain. Most but not all studies show that long-term treatment with antidepressants stimulates CREB function, possibly depending on the type of drug and the dosage.<sup>28</sup> Levels of CREB and phospho-CREB were reduced in postmortem studies of the cor-

texes of patients who had a major depressive disorder and had not taken antidepressants, as compared with controls.<sup>26,28</sup> Many studies of second-messenger systems and transcription factors in depression were inspired by the belief that it takes several weeks before antidepressant treatment has an effect; consequently, the studies were designed to detect time-dependent biochemical changes in the cell. New meta-analyses suggest that antidepressant effects begin rapidly, however,<sup>29</sup> thereby supporting the classic monoamine-deficiency hypothesis.

A strong point of the monoamine theory has been its predictive power. Almost every compound that has been synthesized for the purpose of inhibiting norepinephrine or serotonin reuptake has been proved to be a clinically effective antidepressant. A behavioral model of depression has been developed in which a rodent is placed in a glass cylinder filled with water, the sheer wall offering no chance of escape. The animal struggles for a while and then floats passively (the forced swim test). A single prior injection of antidepressant increases the struggling time; results in this model have excellent predictive validity for new antidepressants. Other animal models have been developed by selective breeding of rats for depression-like behavior, and these genetically susceptible rodents also have a response to antidepressants.<sup>30</sup> Still other models that can be studied biochemically induce depression with the use of long-term mild stress or learned helplessness. However, no animal model of depression captures the periodic change of behavior into and out of depression that is seen in patients with depression.

Molecular techniques such as gene knockout partially support the monoamine theory of depression. The serotonin-reuptake-transporter knockout mouse is excessively anxious and characterized by increased immobility in the forced swim test.<sup>31</sup> This effect is similar to that of the low-activity polymorphic variant of the serotonin receptor on human personality<sup>10</sup> but is the opposite of the expected effects of serotonin-reuptake-inhibitor antidepressants. However, this inconsistency could be explained by the difference between a chronic monoamine abnormality during brain development<sup>31</sup> and the hypothesized acute monoamine depletion in an adult with depression. Table 1 shows the effects in mice of knocking out genes related to monoamine neurotransmitters.

The effects of stimulants on mood indirectly

support the monoamine-deficiency hypothesis of depression and show that mood can be altered rapidly. Cocaine and amphetamines are powerful releasers of monoamines into the synapse as well as inhibitors of reuptake. Their mood-elevating effects are immediate, but in patients with severe depression they have often been reported to cause agitation rather than relief of depression. This finding could reflect the ability of these stimulants to deplete the presynapse of monoamines and thus cause a “crash” into depression. Recent studies support the theory that an acute response to a single dose of amphetamine predicts a patient’s longer-term response to monoamine-reuptake inhibitors.<sup>46</sup>

The role of dopamine deficiency in depression is suggested by the frequency of depression in patients with Parkinson’s disease and the effect of reserpine, which depletes serotonin, norepinephrine, and dopamine, causing a hypoactive state in animals. The antidepressant agent bupropion inhibits the reuptake of dopamine. Some direct dopamine-receptor agonists, such as pramipexole, have been reported to be efficacious in the treatment of depression, even though they were developed for Parkinson’s disease.<sup>47</sup>

A major liability of the monoamine-deficiency hypothesis is its derivation from the mechanism of currently available antidepressants. Approximately two thirds of patients have a clinical response to these agents, whereas one third have a response to placebo.<sup>48</sup> Perhaps the mechanism of depression is not related to monoamines in two of three cases.

---

STRESS, THE HYPOTHALAMIC–  
PITUITARY–ADRENAL AXIS,  
AND GROWTH FACTORS

---

Stress<sup>49</sup> is perceived by the cortex of the brain and transmitted to the hypothalamus, where corticotropin-releasing hormone (CRH) is released onto pituitary receptors. This stimulus results in the secretion of corticotropin into plasma, stimulation of corticotropin receptors in the adrenal cortex, and release of cortisol into the blood. Hypothalamic cortisol receptors respond by decreasing CRH production to maintain homeostasis (Fig. 2).

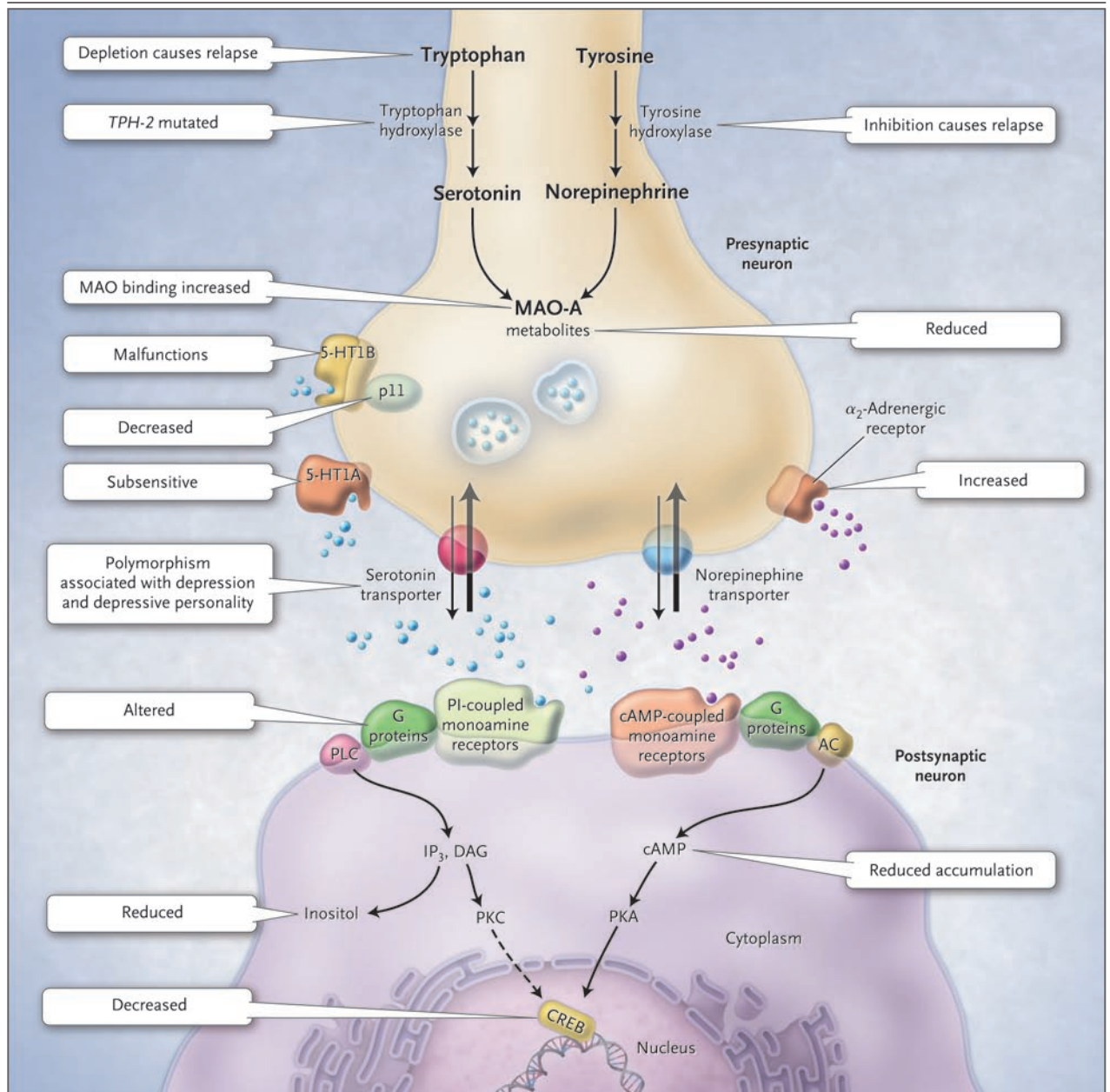
There is considerable evidence that cortisol and its central releasing factor, CRH, are involved in depression.<sup>50,51</sup> Patients with depression may have elevated cortisol levels in plasma,<sup>38</sup> elevated

**Figure 1 (facing page). The Monoamine-Deficiency Hypothesis Extended.**

The monoamine hypothesis of depression postulates a deficiency in serotonin or norepinephrine neurotransmission in the brain. Monoaminergic neurotransmission is mediated by serotonin (5-hydroxytryptamine 1A [5-HT1A] and 5-hydroxytryptamine 1B [5-HT1B]) or norepinephrine (noradrenaline) released from presynaptic neurons (serotonergic neuron, shown on the left side, and noradrenergic neuron, shown on the right side [condensed virtually]). Serotonin is synthesized from tryptophan, with the first step in the synthetic pathway catalyzed by tryptophan hydroxylase; norepinephrine is synthesized from tyrosine, with the first step catalyzed by tyrosine hydroxylase. Both monoamine transmitters are stored in vesicles in the presynaptic neuron and released into the synaptic cleft, thereby affecting both presynaptic and postsynaptic neurons. Cessation of the synaptic action of the neurotransmitters occurs by means of both reuptake through the specific serotonin and norepinephrine transporters and feedback control of release through the presynaptic 5-HT1A and 5-HT1B regulatory autoreceptors for serotonin and the  $\alpha$ 2-noradrenergic autoreceptors for norepinephrine. Monoamine oxidase A (MAO-A) catabolizes monoamines presynaptically and thereby indirectly regulates vesicular content. The protein p11, which interacts with 5-HT1B receptors, increases their function. Postsynaptically, both serotonin and norepinephrine bind two kinds of guanine nucleotide triphosphate-binding protein (G protein)-coupled receptors: cyclic AMP (cAMP)-coupled receptors, which activate adenylate cyclase (AC) to generate cAMP, and phosphatidylinositol (PI)-coupled receptors, which activate phospholipase C (PLC). PLC generates inositol triphosphate (IP<sub>3</sub>) and diacylglycerol (DAG); cAMP activates protein kinase A (PKA), and IP<sub>3</sub> and DAG activate protein kinase C (PKC). The two protein kinases affect the cAMP response element-binding protein (CREB). Findings in patients with depression that support the monoamine-deficiency hypothesis include a relapse of depression with inhibition of tyrosine hydroxylase or depletion of dietary tryptophan, an increased frequency of a mutation affecting the brain-specific form of tryptophan hydroxylase (TPH-2), increased specific ligand binding to MAO-A, subsensitive 5-HT1A receptors, malfunctioning 5-HT1B receptors, decreased levels of p11, polymorphisms of the serotonin-reuptake transporter associated with depression, an inadequate response of G proteins to neurotransmitter signals, and reduced levels of cAMP, inositol, and CREB in postmortem brains.

CRH levels in cerebrospinal fluid,<sup>50</sup> and increased levels of CRH messenger RNA and protein in limbic brain regions.<sup>50</sup> In studies using dexamethasone to evaluate the sensitivity of the hypothalamus to feedback signals for the shutdown of CRH release, the normal cortisol-suppression response is absent in about half of the most se-





verely depressed patients.<sup>52</sup> Antidepressant-induced clinical remission is accompanied by reversal of some of these abnormalities.<sup>52</sup>

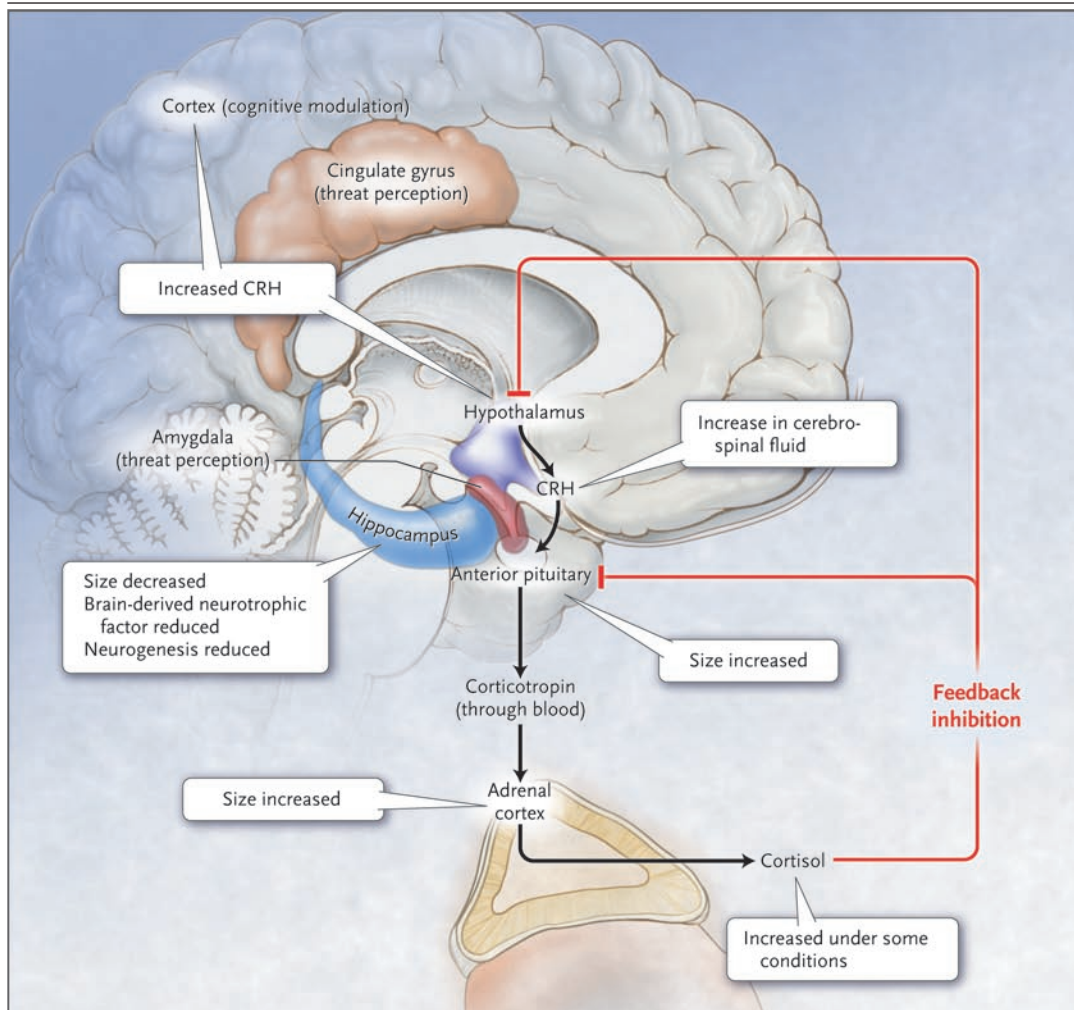
Adults with a history of physical or sexual abuse as children have increased levels of CRH in cerebrospinal fluid.<sup>53</sup> Adult rodents that were separated from their mothers or abused as pups show increased immobility in the forced swim test, which is reversed by antidepressant treatment.<sup>54</sup> Mice with region-specific knockout of the glucocorticoid receptor at an adult age have increased

activity of the hypothalamic–pituitary–adrenal axis and increased immobility in the forced swim test, both of which are reversed by antidepressants.<sup>55</sup> Increased levels of monoamines in the synapse affect the hypothalamic–pituitary–adrenal axis<sup>56</sup> and reverse some of the long-term effects of stress.<sup>56</sup> It is possible that antidepressants relieve depression by reducing the secondary stress caused by a painfully dispirited mood rather than by directly elevating mood. An antistress mechanism could explain the general usefulness of antidepres-

**Table 1. Monoamine-Related Gene Knockouts That Affect Depression-Related Behavior in Mice.\***

Gene or Protein	Function	Depression-Related Changes	Corroboration of Monoamine-Deficiency Hypothesis	Other Behavior Elicited by Knockout of Gene
<i>sert</i>	Serotonin transporter	Increased depressive behavior, reduced serotonin level, desensitized postsynaptic 5-HT1AR, and reduced presynaptic 5-HT1AR function <sup>32</sup>	No	Excessive anxiety <sup>32</sup>
<i>net</i>	Norepinephrine transporter	Reduced depressive behavior, prolonged norepinephrine clearance, elevated extracellular norepinephrine levels <sup>33</sup>	Yes	Increased locomotion response to amphetamines and cocaine <sup>33</sup>
<i>5-ht1ar</i>	Serotonergic 1A receptor (presynaptic autoreceptor and postsynaptic)	Reduced depressive behavior, normal serotonin level and release, impaired SSRI-induced neurogenesis <sup>32</sup>	No	Excessive anxiety, impaired hippocampal learning <sup>32</sup>
<i>5-ht1br</i>	Serotonergic 1B receptor (presynaptic autoreceptor and postsynaptic)	Reduced response to SSRI in forced swim test, reduced serotonin level and increased serotonin release, increased SSRI-induced serotonin release, decreased serotonin-transporter expression <sup>32</sup>	Yes	Increased aggressiveness, reduced anxiety, increased exploration, increased use of cocaine <sup>32</sup>
p11 (protein)	Interacts with and enhances signaling efficiency of 5-HT1BR	Increased depressive behavior, increased serotonin turnover <sup>20</sup>	No	Not reported <sup>20</sup>
<i>5-ht2ar</i>	Serotonergic 2A receptor	No change <sup>34</sup>	No	Reduced inhibition in conflict-anxiety paradigms <sup>34</sup>
<i>5-ht7</i>	Serotonergic 7 receptor (possibly presynaptic autoreceptor and postsynaptic)	Reduced depressive behavior and REM sleep duration <sup>35</sup>	No	Normal locomotion <sup>35</sup>
<i>α<sub>2a</sub>ar</i>	α <sub>2A</sub> -Adrenergic receptors (presynaptic autoreceptor)	Reduced norepinephrine levels, presynaptic inhibition of release, <sup>36</sup> increased depressive behavior <sup>37</sup>	No	Altered sympathetic regulation, <sup>36</sup> impaired motor coordination
<i>α<sub>2c</sub>ar</i>	α <sub>2C</sub> -Adrenergic receptors (presynaptic autoreceptor restricted to central nervous system)	Reduced depressive behavior <sup>38</sup>	Yes	Increased aggressiveness, <sup>32</sup> increased locomotion response to amphetamines <sup>36</sup>
<i>mao-a</i>	Monoamine oxidase A	Increased brain serotonin and epinephrine levels <sup>39</sup>	No	Increased aggressiveness and response to stress, <sup>30</sup> decreased exploration <sup>32</sup>
<i>ac VII</i> (heterozygotes)	Adenylyl cyclase type 7	Reduced depressive behavior <sup>40</sup>	No	Unchanged anxiety <sup>40</sup>
<i>impa1</i>	Inositol monophosphatase 1	Reduced depressive behavior, unaltered brain inositol levels <sup>41</sup>	Yes	Increased hyperactivity and sensitivity to pilocarpine-induced seizures <sup>41</sup>
<i>smit1</i>	Sodium-myoinositol transporter 1	Reduced depressive behavior and brain inositol levels <sup>42</sup>	Yes	Increased sensitivity to pilocarpine-induced seizures <sup>42</sup>
<i>creb</i>	Cyclic AMP–response element–binding protein	Reduced depressive behavior, normal antidepressant-induced behavior <sup>43</sup>	No	No increase in BDNF after long-term use of antidepressants <sup>43</sup>
<i>bdnf</i>	Male mice Brain-derived neurotrophic factor	No depressive behavior <sup>44</sup>	No	Increased aggressiveness, hyperphagia, <sup>45</sup> hyperactivity <sup>44</sup>
	Female mice Brain-derived neurotrophic factor	Increased depressive behavior <sup>44</sup>	Yes	Increased aggressiveness, hyperphagia <sup>45</sup>

\* BDNF denotes brain-derived neurotrophic factor, 5-HT1AR 5-hydroxytryptamine 1A receptor, 5-HT1BR 5-hydroxytryptamine 1B receptor, REM rapid eye movement, and SSRI selective serotonin-reuptake inhibitor.



**Figure 2. The Hypothalamic–Pituitary–Cortisol System in Depression.**

The hypothalamic–pituitary–cortisol hypothesis of depression postulates that abnormalities in the cortisol response to stress may underlie depression. The black arrows show that in response to stress, which is perceived by the brain cortex and the amygdala and transmitted to the hypothalamus, corticotropin-releasing hormone (CRH) is released, inducing the anterior pituitary gland to secrete corticotropin into the bloodstream. Corticotropin stimulates the adrenal cortexes to secrete the glucocorticoid hormone cortisol. The red lines show that cortisol, in turn, induces feedback inhibition in the hypothalamus and the pituitary, suppressing the production of CRH and corticotropin, respectively. Findings in patients with depression that support the hypothalamic–pituitary–cortisol hypothesis include the following: cortisol levels are sometimes increased in severe depression, the size of the anterior pituitary and adrenal cortex is increased, and CRH levels in the cerebrospinal fluid and CRH expression in the limbic brain regions are increased. Hippocampal size and the numbers of neurons and glia are decreased, possibly reflecting reduced neurogenesis due to elevated cortisol levels or due to reduced brain-derived neurotrophic factor.

sants for a wide variety of psychiatric conditions, including panic disorder, post-traumatic stress disorder, bulimia, premenstrual syndrome, and obsessive–compulsive disorder. CRH-receptor antagonists show antidepressant activity in animal models,<sup>57</sup> but the results of large clinical trials have been disappointing. A compound that blocks the glucocorticoid receptor has been reported to

be efficacious in depression, but only the most severe and psychotic type.<sup>58</sup>

A single test for the cortisol level in blood does not contribute to the diagnosis of depression, since levels of cortisol vary markedly in a circadian rhythm<sup>38</sup> and because the overlap between values in patients and those in controls is considerable. Mild stress induced in the laboratory, such as

**Table 2. Additional Biologic Theories of the Pathophysiology of Depression.\***

Theory	Supporting Evidence	Contradictory Evidence
Altered glutamatergic neurotransmission	Glutamate and glutamine levels in the prefrontal cortex are reduced <sup>93</sup> Intravenous ketamine, an NMDA antagonist, induces rapid, sustained antidepressant effect <sup>94</sup> Cortical messenger RNA levels of glutamate transporters and of the enzyme that converts glutamate to glutamine are reduced <sup>96</sup>	Glutamate levels in the occipital cortex are increased <sup>92,93</sup> Ketamine binds to high-affinity-state D2 dopamine receptors <sup>95</sup>
Reduced GABAergic neurotransmission	Levels of GABA in plasma, cerebrospinal fluid, the dorsolateral prefrontal cortex, and the occipital cortex are reduced <sup>91-93</sup> GABA-modulating agents have effects in animal models of depression <sup>98</sup>	It is not clear whether antidepressants affect AMPA receptors in the brain <sup>97</sup> GABA occurs in more than 30% of brain synapses, suggesting nonspecificity There is a lack of difference in prefrontal cortex GABA levels on MRS in depression <sup>99</sup>
Abnormal circadian rhythms	Antidepressants affect GABAergic function <sup>98</sup> GABA neuron immunoreactivity is reduced in the prefrontal cortex <sup>100</sup> Sleep deprivation and light therapy have antidepressant effects <sup>101,102</sup> Some patients with depression have circadian abnormalities of mood, sleep, temperature, and neuroendocrine secretion <sup>104</sup> Rodents active during the day become depressed when daylight is shortened <sup>105</sup>	GABA neurotransmission may be related to symptoms of anxiety in depression The association between clock-related genes and depression is inconsistent <sup>103</sup>
Deficient neurosteroid synthesis	Cholesterol levels are low in plasma and the brain during depression <sup>106</sup> DHEA has antidepressant effects in patients with depression <sup>108</sup>	The findings in schizophrenia are similar <sup>107</sup> Neurosteroids (neuroactive steroids in the brain that modulate neurotransmitter receptors) mostly affect memory and sleep
Impaired endogenous opioid function	$\delta$ -Opioid-receptor agonists have antidepressant-like effects in rodents and up-regulate levels of BDNF in the brain <sup>109</sup> Capacity for cortical $\mu$ -opioid-receptor binding is decreased in response to sustained sadness <sup>111</sup>	Although early reports suggested that opiates may be effective in treating depression, <sup>110</sup> data from large, controlled, randomized trials are lacking
Monoamine-acetylcholine imbalance	Depressed mood can be induced in humans by administration of physostigmine, an acetylcholinesterase inhibitor <sup>112</sup> Nicotinic acetylcholine receptor antagonists potentiate antidepressants <sup>114</sup>	Mecamylamine, a nicotinic acetylcholine receptor antagonist, reduced symptoms of depression <sup>113</sup> Many antidepressants are not anticholinergic
Cytokine-mediated crosstalk between the immune system and the brain	Depression is common in infectious and autoimmune diseases <sup>115</sup> Exposure to cytokines induces depressive symptoms, and cytokine secretion is increased in major depression <sup>115</sup> Antidepressants have antiinflammatory effects <sup>115</sup> Cytokines affect the hypothalamic-pituitary-adrenal axis and monoamines <sup>115</sup>	Most studies are correlative <sup>116</sup> Cytokine-induced depressive symptoms are temporary and not replicated in all studies <sup>117</sup> Substance P antagonists are not therapeutic in depression



Thyroxine abnormalities	Levels of transthyretin are reduced in the cerebrospinal fluid in patients with depression <sup>118</sup>	
	Thyroid hormones modulate the serotonergic system in the brain <sup>119</sup>	Thyroxine monotherapy is ineffective
	Brain neurogenesis is decreased after the administration of thyroxine in adult rats with hypothyroidism <sup>120</sup>	Hypothyroidism is not manifested in most patients with depression
	Rate of response to triiodothyronine is increased during depression <sup>121</sup>	
Dysfunction of specific brain structures and circuits	Transcranial magnetic stimulation of the prefrontal cortex <sup>122</sup> and deep-brain stimulation of the anterior cingulate affect mood <sup>123</sup>	Implicated brain areas differ from study to study
	Glucose use is reduced in the prefrontal cortex <sup>124</sup> and subgenual prefrontal cortex <sup>125</sup>	Inconsistent findings with respect to blood flow, volumetric, glucose utilization, and postmortem methodologies <sup>63,124,126</sup>
	Circuit dynamics in the hippocampus are altered in a rat model of depression <sup>127</sup>	

\* AMPA denotes alpha-amino-3-hydroxy-5-methyl-4-isoxazole propionic acid, BDNF brain-derived neurotrophic factor, DHEA dehydroepiandrosterone, GABA  $\gamma$ -aminobutyric acid, MRS magnetic resonance spectroscopy, and NMDA *N*-methyl-D-aspartic acid.

stress associated with mental arithmetic calculations or simulated public speaking, results in greater changes in plasma cortisol levels than most reported differences between the values in patients with depression and those in controls.<sup>38</sup> It is possible that chronic mild elevations of cortisol, especially at night, when cortisol levels in normal subjects are very low, have a pathogenic role in depression. It is also possible that peripheral cortisol elevations are only a reflection of central disturbances in CRH signaling, which mediate the effects of environmental stress on mood.<sup>59</sup> A major liability of the hypothalamic–pituitary–adrenal axis theory of depression is the difficulty of defining the relationship of stress to depression. Some patients have a single lifetime depressive episode, whereas a larger proportion have a recurrent or even chronic course. Various types of acute stress, early childhood trauma, or long-term psychosocial problems may be involved and may lead to different responses of the stress system. Stress may be causative in some cases and secondary to depressed mood in others.

Severe stress in rodents does not necessarily model the common stresses of childhood. The association of abuse in childhood with psychopathologic disorders, including depression, in adulthood could be due to common factors linking family perpetrators of abuse and their victims, including not only shared genes but also a shared environment of poverty, poor nutrition, and poor prenatal care. Depression is not uncommon in people with no psychosocial risk factors. Most patients treated for depression have no evidence of hypothalamic–pituitary–adrenal dysfunction, just as most such patients have no direct evidence of brain monoamine deficiency.

The classic teaching is that neurons do not divide in the adult mammalian brain, but studies have shown that neurogenesis occurs in several areas of the brain, especially the hippocampus. Neurogenesis is more prominent in rodents than in primates,<sup>60</sup> and some have questioned whether it occurs in the human cortex.<sup>61</sup> Elevated levels of glucocorticoids can reduce neurogenesis, and this has been suggested as a mechanism for the decreased size of the hippocampus on magnetic resonance images of the brain in many patients with depression.<sup>62</sup> In postmortem studies of patients with depression, cell loss in the subgenual prefrontal cortex, atrophy in the dorsolateral prefrontal cortex and the orbitofrontal cortex, and

increased numbers of cells in the hypothalamus and the dorsal raphe nucleus have been reported.<sup>63</sup> These effects resemble the atrophic changes in the brain in patients with Cushing's disease<sup>64</sup> and in rodents treated with glucocorticoids.<sup>65</sup> However, cortisol elevations in depression are much lower than in Cushing's disease.

Restraint in a small container induces stress in rodents, suppressing neurogenesis, and this effect is countered by antidepressant treatment.<sup>66</sup> Antidepressants also enhance neurogenesis in non-human primates.<sup>67</sup> Santarelli et al.<sup>68</sup> irradiated the hippocampus in mice and abolished neurogenesis. They found that the radiation also abolished the ability of the animals to respond behaviorally to antidepressant treatment in the forced swim test, but this phenomenon does not occur in every mouse strain studied.<sup>69</sup> Henn and Vollmayr summarized other studies providing evidence that decreased neurogenesis is a result of stress and anxiety but may not be behaviorally relevant.<sup>70</sup> The relevance of animal models of neurogenesis to clinical studies of depression has been questioned by analogy with studies of neuroprotection strategies in stroke, for which numerous findings in animal models have not been replicated in human studies.<sup>71</sup>

Brain-derived neurotrophic factor (BDNF), a neurotrophic peptide, is critical for axonal growth, neuronal survival, and synaptic plasticity,<sup>72</sup> and its levels are affected by stress<sup>73</sup> and cortisol.<sup>74</sup> A postmortem study of patients with depression who had committed suicide showed that BDNF was reduced in the hippocampus.<sup>75</sup> Antidepressant drugs and electroconvulsive therapy up-regulate BDNF and other neurotrophic and growth factors<sup>75,76</sup>; a single bilateral infusion of BDNF into the dentate gyrus has antidepressant-like effects.<sup>77</sup> One study showed that the hippocampus was smaller than normal in patients with depression who carried a met166 BDNF allele.<sup>78</sup> In an animal model of depression, epigenetic histone methylation mediated down-regulation of BDNF transcripts and antidepressant treatment reversed this effect.<sup>79</sup> These studies suggest that BDNF is the link among stress, neurogenesis, and hippocampal atrophy in depression. However, a genetic association of the BDNF val166met polymorphism with depression has not been replicated in most studies,<sup>74</sup> and BDNF may be related not only to depression but to multiple psychiatric disorders.<sup>74</sup> BDNF-knockout mice have behaviors un-

related to depression.<sup>45</sup> Reduced BDNF levels in the peripheral blood of patients with depression seem to derive almost entirely from blood platelets,<sup>80</sup> and many artifacts must therefore be considered in interpreting these findings. Inflammation in the brain and some neurotoxins increase brain BDNF levels, suggesting that the actions of BDNF are not uniformly therapeutic.<sup>81</sup> Castrén<sup>82</sup> has proposed that antidepressant treatments may increase synaptic sprouting and allow the brain to use input from the environment more effectively to recover from depression. This hypothesis highlights the role that cognition may play in depression and suggests that biochemical mechanisms may be nonspecific.

Strong epidemiologic data point to an association between major depressive disorder and increased cardiovascular morbidity and mortality.<sup>83</sup> In many patients, cardiovascular disorders precede depression, and in others, depression precedes the cardiovascular disorder. Both n-3 fatty acid deficiency<sup>84</sup> and elevated plasma homocysteine levels<sup>85</sup> have been implicated in cardiovascular disease and in depression. Elevated cortisol levels in depression could increase the risk of coronary artery disease, since cortisol increases visceral fat.<sup>64,86</sup> Antidepressant treatment increases the survival rate among patients who become depressed after coronary occlusion.<sup>86</sup> Endothelial-cell signaling plays a crucial role in brain neurogenesis,<sup>87</sup> and these cells secrete BDNF; thus, both depression and cardiovascular disease could be examples of an endothelial disorder. Signs of inflammatory processes have been described in major depression<sup>88</sup> and in cardiovascular disease. Some data suggest that exercise has protective or therapeutic effects in depression.<sup>89</sup> Rodent models support this possibility.<sup>90</sup>

---

#### OTHER POSSIBLE MECHANISMS

---

Table 2 summarizes possible pathophysiological mechanisms of depression other than those based on the monoamine-deficiency hypothesis or the roles of stress, cortisol, and neurogenesis. Many of these other proposed mechanisms have also been implicated in psychiatric and neurologic disorders other than depression. Since the components of the brain are highly interconnected, it is not difficult to find possible integrative frameworks between two or more of the various theories. Testing the theories in a manner that can re-

ject the null hypothesis has been more difficult. Research in depression has sometimes been sequentially imitative of dominant ideas in related fields, such as neurogenesis, glutamate neurotransmission, and nicotinic receptors, instead of progressing on its own path.

---

#### SUMMARY

---

It would be appealing to attempt to categorize depression in terms of monoamine-depletion forms that are perhaps related to genes coding for enzymes involved in neurotransmission and cortisol-related forms that are characterized by a more long-term course, hippocampal atrophy, and a history of psychosocial stress. However, the clinical data do not fall into such neat categories, since monoamine-based antidepressants are most effective in patients with severe depression when cortisol levels remain high after the administration of dexamethasone.

Major depressive disorder is likely to have a number of causes. Middle-aged or elderly patients presenting with depression may have a disorder related to cardiovascular disease and originating

from endothelial dysfunction.<sup>128</sup> Patients in their late teens or early 20s who have severe depression may have important genetic risk factors and a high risk of manic episodes.<sup>8</sup> In patients with an anxious and depressive personality, depression may be due to genetically determined personality factors<sup>11</sup> or adverse childhood experiences.<sup>129</sup>

Avoidance of premature closure on any one scientific theory of the mechanism of depression will best serve the search for new, more effective treatments. It is likely that the pathogenesis of acute depression is different from that of recurrent or chronic depression, which is characterized by long-term declines in function and cognition. Mood can be elevated (by stimulants,<sup>46</sup> by brain stimulation,<sup>123</sup> or by ketamine<sup>94</sup>) or depressed (by monoamine depletion<sup>19</sup> in recovered patients) for short periods, but longer-term improvement may require reduction of the abnormal glucocorticoid function induced by stress or increases in brain neurotrophic factors.

No potential conflict of interest relevant to this article was reported.

We thank Herman van Praag, who inspired our work on depression over the course of three decades.

---

#### REFERENCES

- Wakefield JC, Schmitz MF, First MB, Horwitz AV. Extending the bereavement exclusion for major depression to other losses: evidence from the National Comorbidity Survey. *Arch Gen Psychiatry* 2007;64:433-40.
- Kessler RC, Berglund P, Demler O, et al. The epidemiology of major depressive disorder: results from the National Comorbidity Survey Replication (NCS-R). *JAMA* 2003;289:3095-105.
- Van Praag H. Monoamine precursors in depression: present state and prospects. In: Zohar J, Belmaker RH, eds. *Treating resistant depression*. New York: PMA Publishing, 1987:279-306.
- Belmaker RH. Bipolar disorder. *N Engl J Med* 2004;351:476-86.
- Sullivan PF, Neale MC, Kendler KS. Genetic epidemiology of major depression: review and meta-analysis. *Am J Psychiatry* 2000;157:1552-62.
- Bouchard TJ Jr. Genes, environment, and personality. *Science* 1994;264:1700-1.
- Kendler KS, Gatz M, Gardner CO, Pedersen NL. A Swedish national twin study of lifetime major depression. *Am J Psychiatry* 2006;163:109-14.
- Kendler KS, Gardner CO, Prescott CA. Clinical characteristics of major depression that predict risk of depression in relatives. *Arch Gen Psychiatry* 1999;56:322-7. [Erratum, *Arch Gen Psychiatry* 2000; 57:94-5.]
- Holmans P, Weissman MM, Zubenko GS, et al. Genetics of recurrent early-onset major depression (GenRED): final genome scan report. *Am J Psychiatry* 2007;164:248-58.
- Lesch KP, Bengel D, Heils A, et al. Association of anxiety-related traits with a polymorphism in the serotonin transporter gene regulatory region. *Science* 1996; 274:1527-31.
- Lesch KP, Greenberg BD, Higley JD, Bennett A, Murphy DL. Serotonin transporter, personality, and behavior: toward a dissection of gene-gene and gene-environment interaction. In: Benjamin J, Ebstein RP, Belmaker RH, eds. *Molecular genetics and the human personality*. Washington, DC: American Psychiatric Publishing, 2002:109-35.
- Pezawas L, Meyer-Lindenberg A, Drabant EM, et al. 5-HTTLPR polymorphism impacts human cingulate-amygdala interactions: a genetic susceptibility mechanism for depression. *Nat Neurosci* 2005; 8:828-34.
- Caspi A, Sugden K, Moffitt TE, et al. Influence of life stress on depression: moderation by a polymorphism in the 5-HTT gene. *Science* 2003;301:386-9.
- Weaver IC, Cervoni N, Champagne FA, et al. Epigenetic programming by maternal behavior. *Nat Neurosci* 2004;7:847-54.
- Zhang X, Beaulieu JM, Sotnikova TD, Gainetdinov RR, Caron MG. Tryptophan hydroxylase-2 controls brain serotonin synthesis. *Science* 2004;305:217.
- Zhang X, Gainetdinov RR, Beaulieu JM, et al. Loss-of-function mutation in tryptophan hydroxylase-2 identified in unipolar major depression. *Neuron* 2005;45:11-6.
- Meyer JH, Ginovart N, Boovariwala A, et al. Elevated monoamine oxidase A levels in the brain: an explanation for the monoamine imbalance of major depression. *Arch Gen Psychiatry* 2006;63:1209-16.
- Lambert G, Johansson M, Agren H, Friberg P. Reduced brain norepinephrine and dopamine release in treatment-refractory depressive illness: evidence in support of the catecholamine hypothesis of mood disorders. *Arch Gen Psychiatry* 2000;57: 787-93.
- Ruhé HG, Mason NS, Schene AH. Mood is indirectly related to serotonin, norepinephrine and dopamine levels in humans: a meta-analysis of monoamine depletion studies. *Mol Psychiatry* 2007;12: 331-59.
- Svenningsson P, Chergui K, Rachleff I, et al. Alterations in 5-HT1B receptor func-

- tion by p11 in depression-like states. *Science* 2006;311:77-80.
21. Pitchot W, Hansenne M, Pinto E, Reggers J, Fuchs S, Ansseau M. 5-Hydroxytryptamine 1A receptors, major depression, and suicidal behavior. *Biol Psychiatry* 2005;58:854-8.
  22. Ordway GA, Schenk J, Stockmeier CA, May W, Klimek V. Elevated agonist binding to alpha2-adrenoceptors in the locus coeruleus in major depression. *Biol Psychiatry* 2003;53:315-23.
  23. Shimon H, Agam G, Belmaker RH, Hyde TM, Kleinman JE. Reduced frontal cortex inositol levels in postmortem brain of suicide victims and patients with bipolar disorder. *Am J Psychiatry* 1997;154:1148-50.
  24. Coupland NJ, Ogilvie CJ, Hegadoren KM, Seres P, Hanstock CC, Allen PS. Decreased prefrontal myo-inositol in major depressive disorder. *Biol Psychiatry* 2005;57:1526-34.
  25. Valdiván EM, Gutierrez O, Pazos A. Adenylate cyclase activity in postmortem brain of suicide subjects: reduced response to beta-adrenergic stimulation. *Biol Psychiatry* 2003;54:1457-64.
  26. Chang A, Li PP, Warsh JJ. cAMP signal transduction abnormalities in the pathophysiology of mood disorders: contributions from postmortem brain studies. In: Agam G, Everall IP, Belmaker RH, eds. *The postmortem brain in psychiatric research*. Boston: Kluwer Academic, 2002: 341-62.
  27. Avissar S, Nechamkin Y, Roitman G, Schreiber G. Reduced G protein functions and immunoreactive levels in mononuclear leukocytes of patients with depression. *Am J Psychiatry* 1997;154:211-7.
  28. Blendy JA. The role of CREB in depression and antidepressant treatment. *Biol Psychiatry* 2006;59:1144-50.
  29. Taylor MJ, Freemantle N, Geddes JR, Bhagwagar Z. Early onset of selective serotonin reuptake inhibitor antidepressant action: systematic review and meta-analysis. *Arch Gen Psychiatry* 2006;63:1217-23.
  30. Overstreet DH, Friedman E, Mathé AA, Yadid G. The Flinders Sensitive Line rat: a selectively bred putative animal model of depression. *Neurosci Biobehav Rev* 2005;29:739-59.
  31. Ansoorge MS, Zhou M, Lira A, Hen R, Gingrich JA. Early-life blockade of the 5-HT transporter alters emotional behavior in adult mice. *Science* 2004;306:879-81.
  32. Gingrich JA. Mutational analysis of the serotonergic system: recent findings using knockout mice. *Curr Drug Targets CNS Neurol Disord* 2002;1:449-65.
  33. Dziejdzicka-Wasylewska M, Faron-Górecka A, Kusmider M, et al. Effect of antidepressant drugs in mice lacking the norepinephrine transporter. *Neuropsychopharmacology* 2006;31:2424-32.
  34. Weisstaub NV, Zhou M, Lira A, et al. Cortical 5-HT<sub>2A</sub> receptor signaling modulates anxiety-like behaviors in mice. *Science* 2006;313:536-40.
  35. Hedlund PB, Huitron-Resendiz S, Henriksen SJ, Sutcliffe JG. 5-HT<sub>7</sub> receptor inhibition and inactivation induce antidepressant-like behavior and sleep pattern. *Biol Psychiatry* 2005;58:831-7.
  36. Kable JW, Murrin LC, Bylund DB. In vivo gene modification elucidates subtype-specific functions of alpha(2)-adrenergic receptors. *J Pharmacol Exp Ther* 2000;293:1-7.
  37. Schramm NL, McDonald MP, Limbird LE. The alpha(2a)-adrenergic receptor plays a protective role in mouse behavioral models of depression and anxiety. *J Neurosci* 2001;21:4875-82.
  38. Burke HM, Davis MC, Otte C, Mohr DC. Depression and cortisol responses to psychological stress: a meta-analysis. *Psychoneuroendocrinology* 2005;30:846-56.
  39. Cases O, Seif I, Grimmsby J, et al. Aggressive behavior and altered amounts of brain serotonin and norepinephrine in mice lacking MAOA. *Science* 1995;268:1763-6.
  40. Hines LM, Hoffman PL, Bhawe S, et al. A sex-specific role of type VII adenylyl cyclase in depression. *J Neurosci* 2006;26:12609-19.
  41. Cryns K, Shamir A, Van Acker N, et al. IMPA1 is essential for embryonic development and lithium-like pilocarpine sensitivity. *Neuropsychopharmacology* (in press).
  42. Bersudsky Y, Shalubina A, Agam G, Berry GT, Belmaker H. Homozygote inositol transporter knockout mice show a lithium-like phenotype. *Bipolar Disord* (in press).
  43. Conti AC, Cryan JF, Dalvi A, Lucki I, Blendy JA. cAMP response element-binding protein is essential for the upregulation of brain-derived neurotrophic factor transcription, but not the behavioral or endocrine responses to antidepressant drugs. *J Neurosci* 2002;22:3262-8.
  44. Monteggia LM, Luikart B, Barrot M, et al. Brain-derived neurotrophic factor conditional knockouts show gender differences in depression-related behaviors. *Biol Psychiatry* 2007;61:187-97.
  45. Lyons WE, Mamounas LA, Ricaurte GA, et al. Brain-derived neurotrophic factor-deficient mice develop aggressiveness and hyperphagia in conjunction with brain serotonergic abnormalities. *Proc Natl Acad Sci U S A* 1999;96:15239-44.
  46. Tremblay LK, Naranjo CA, Cardenas L, Herrmann N, Busto UE. Probing brain reward system function in major depressive disorder: altered response to dextroamphetamine. *Arch Gen Psychiatry* 2002;59:409-16.
  47. Gershon AA, Vishne T, Grunhaus L. Dopamine D<sub>2</sub>-like receptors and the antidepressant response. *Biol Psychiatry* 2007;61:145-53.
  48. Mann JJ. The medical management of depression. *N Engl J Med* 2005;353:1819-34.
  49. McEwen BS. Protective and damaging effects of stress mediators. *N Engl J Med* 1998;338:171-9.
  50. Merali Z, Du L, Hrdina P, et al. Dysregulation in the suicide brain: mRNA expression of corticotropin-releasing hormone receptors and GABA(A) receptor subunits in frontal cortical brain region. *J Neurosci* 2004;24:1478-85.
  51. MacMaster FP, Russell A, Mirza Y, et al. Pituitary volume in treatment-naïve pediatric major depressive disorder. *Biol Psychiatry* 2006;60:862-6.
  52. Carroll BJ, Cassidy F, Naftolowitz D, et al. Pathophysiology of hypercortisolism in depression. *Acta Psychiatr Scand Suppl* 2007;433:90-103.
  53. Lee R, Geraciotti TD Jr, Kasckow JW, Coccaro EF. Childhood trauma and personality disorder: positive correlation with adult CSF corticotropin-releasing factor concentrations. *Am J Psychiatry* 2005;162:995-7.
  54. Bhansali P, Dunning J, Singer SE, David L, Schmauss C. Early life stress alters adult serotonin 2C receptor pre-mRNA editing and expression of the alpha subunit of the heterotrimeric G-protein G<sub>q</sub>. *J Neurosci* 2007;27:1467-73.
  55. Boyle MP, Brewer JA, Funatsu M, et al. Acquired deficit of forebrain glucocorticoid receptor produces depression-like changes in adrenal axis regulation and behavior. *Proc Natl Acad Sci U S A* 2005;102:473-8.
  56. Holsboer F. The corticosteroid receptor hypothesis of depression. *Neuropsychopharmacology* 2000;23:477-501.
  57. Louis C, Cohen C, Depoortère R, Griebel G. Antidepressant-like effects of the corticotropin-releasing factor 1 receptor antagonist, SSR125543, and the vasopressin 1b receptor antagonist, SSR149415, in a DRL-72 s schedule in the rat. *Neuropsychopharmacology* 2006;31:2180-7.
  58. Flores BH, Kenna H, Keller J, Solvason HB, Schatzberg AF. Clinical and biological effects of mifepristone treatment for psychotic depression. *Neuropsychopharmacology* 2006;31:628-36.
  59. Strome EM, Wheler GH, Higley JD, Loriaux DL, Suomi SJ, Doudet DJ. Intracerebroventricular corticotropin-releasing factor increases limbic glucose metabolism and has social context-dependent behavioral effects in nonhuman primates. *Proc Natl Acad Sci U S A* 2002;99:15749-54.
  60. Rakic P. Neurogenesis in adult primate neocortex: an evaluation of the evidence. *Nat Rev Neurosci* 2002;3:65-71.
  61. Bhardwaj RD, Curtis MA, Spalding KL, et al. Neocortical neurogenesis in humans is restricted to development. *Proc Natl Acad Sci U S A* 2006;103:12564-8.
  62. MacQueen GM, Campbell S, McEwen



- BS, et al. Course of illness, hippocampal function, and hippocampal volume in major depression. *Proc Natl Acad Sci U S A* 2003;100:1387-92.
63. Rajkowska G. Postmortem studies in mood disorders indicate altered numbers of neurons and glial cells. *Biol Psychiatry* 2000;48:766-77.
64. Brown ES, Varghese FP, McEwen BS. Association of depression with medical illness: does cortisol play a role? *Biol Psychiatry* 2004;55:1-9.
65. Sapolsky RM. Glucocorticoids and hippocampal atrophy in neuropsychiatric disorders. *Arch Gen Psychiatry* 2000;57:925-35.
66. Reagan LP, Rosell DR, Wood GE, et al. Chronic restraint stress up-regulates GLT-1 mRNA and protein expression in the rat hippocampus: reversal by tianeptine. *Proc Natl Acad Sci U S A* 2004;101:2179-84.
67. Perera TD, Coplan JD, Lisanby SH, et al. Antidepressant-induced neurogenesis in the hippocampus of adult nonhuman primates. *J Neurosci* 2007;27:4894-901.
68. Santarelli L, Saxe M, Gross C, et al. Requirement of hippocampal neurogenesis for the behavioral effects of antidepressants. *Science* 2003;301:805-9.
69. Holick KA, Lee DC, Hen R, Dulawa SC. Behavioral effects of chronic fluoxetine in BALB/c mice do not require adult hippocampal neurogenesis or the serotonin 1A receptor. *Neuropsychopharmacology* (in press).
70. Henn FA, Vollmayr B. Neurogenesis and depression: etiology or epiphenomenon? *Biol Psychiatry* 2004;56:146-50.
71. Perel P, Roberts I, Sena E, et al. Comparison of treatment effects between animal experiments and clinical trials: systematic review. *BMJ* 2007;334:197.
72. Heldt SA, Stanek L, Chhatwal JP, Ressler KJ. Hippocampus-specific deletion of BDNF in adult mice impairs spatial memory and extinction of aversive memories. *Mol Psychiatry* 2007;12:656-70.
73. Kozlovsky N, Matar MA, Kaplan Z, Kotler M, Zohar J, Cohen H. Long-term down-regulation of BDNF mRNA in rat hippocampal CA1 subregion correlates with PTSD-like behavioural stress response. *Int J Neuropsychopharmacol* 2007;10:741-58.
74. Angelucci F, Brenè S, Mathé AA. BDNF in schizophrenia, depression and corresponding animal models. *Mol Psychiatry* 2005;10:345-52.
75. Karege F, Vaudan G, Schwald M, Perroud N, La Harpe R. Neurotrophin levels in postmortem brains of suicide victims and the effects of antemortem diagnosis and psychotropic drugs. *Brain Res Mol Brain Res* 2005;136:29-37.
76. Chen B, Dowlatshahi D, MacQueen GM, Wang JF, Young LT. Increased hippocampal BDNF immunoreactivity in subjects treated with antidepressant medication. *Biol Psychiatry* 2001;50:260-5.
77. Shirayama Y, Chen AC, Nakagawa S, Russell DS, Duman RS. Brain-derived neurotrophic factor produces antidepressant effects in behavioral models of depression. *J Neurosci* 2002;22:3251-61.
78. Frodl T, Schüle C, Schmitt G, et al. Association of the brain-derived neurotrophic factor Val66Met polymorphism with reduced hippocampal volumes in major depression. *Arch Gen Psychiatry* 2007;64:410-6.
79. Tsankova NM, Berton O, Renthal W, Kumar A, Neve RL, Nestler EJ. Sustained hippocampal chromatin regulation in a mouse model of depression and antidepressant action. *Nat Neurosci* 2006;9:519-25.
80. Karege F, Bondolfi G, Gervasoni N, Schwald M, Aubry JM, Bertschy G. Low brain-derived neurotrophic factor (BDNF) levels in serum of depressed patients probably results from lowered platelet BDNF release unrelated to platelet reactivity. *Biol Psychiatry* 2005;57:1068-72.
81. de Pablos RM, Villarán RF, Argüelles S, et al. Stress increases vulnerability to inflammation in the rat prefrontal cortex. *J Neurosci* 2006;26:5709-19.
82. Castrén E. Is mood chemistry? *Nat Rev Neurosci* 2005;6:241-6.
83. Lespérance F, Frasure-Smith N, Koszycki D, et al. Effects of citalopram and interpersonal psychotherapy on depression in patients with coronary artery disease: the Canadian Cardiac Randomized Evaluation of Antidepressant and Psychotherapy Efficacy (CREATE) trial. *JAMA* 2007;297:367-79. [Erratum, *JAMA* 2007;298:40.]
84. Nemets B, Stahl Z, Belmaker RH. Addition of omega-3 fatty acid to maintenance medication treatment for recurrent unipolar depressive disorder. *Am J Psychiatry* 2002;159:477-9.
85. Folstein M, Liu T, Peter I, et al. The homocysteine hypothesis of depression. *Am J Psychiatry* 2007;164:861-7. [Erratum, *Am J Psychiatry* 2007;164:1123.]
86. Taylor CB, Youngblood ME, Catellier D, et al. Effects of antidepressant medication on morbidity and mortality in depressed patients after myocardial infarction. *Arch Gen Psychiatry* 2005;62:792-8.
87. Warner-Schmidt JL, Duman RS. VEGF is an essential mediator of the neurogenic and behavioral actions of antidepressants. *Proc Natl Acad Sci U S A* 2007;104:4647-52.
88. Müller N, Schwarz MJ, Dehning S, et al. The cyclooxygenase-2 inhibitor celecoxib has therapeutic effects in major depression: results of a double-blind, randomized, placebo controlled, add-on pilot study to reboxetine. *Mol Psychiatry* 2006;11:680-4.
89. Nabkasorn C, Miyai N, Sootmongkol A, et al. Effects of physical exercise on depression, neuroendocrine stress hormones and physiological fitness in adolescent females with depressive symptoms. *Eur J Public Health* 2006;16:179-84.
90. van Praag H, Kempermann G, Gage FH. Running increases cell proliferation and neurogenesis in the adult mouse dentate gyrus. *Nat Neurosci* 1999;2:266-70.
91. Hasler G, van der Veen JW, Tuminis T, Meyers N, Shen J, Drevets WC. Reduced prefrontal glutamate/glutamine and gamma-aminobutyric acid levels in major depression determined using proton magnetic resonance spectroscopy. *Arch Gen Psychiatry* 2007;64:193-200.
92. Bhagwagar Z, Wylezinska M, Jezzard P, et al. Reduction in occipital cortex gamma-aminobutyric acid concentrations in medication-free recovered unipolar depressed and bipolar subjects. *Biol Psychiatry* 2007;61:806-12.
93. Sanacora G, Gueorguieva R, Epperson CN, et al. Subtype-specific alterations of gamma-aminobutyric acid and glutamate in patients with major depression. *Arch Gen Psychiatry* 2004;61:705-13.
94. Zarate CA Jr, Singh JB, Carlson PJ, et al. A randomized trial of an N-methyl-D-aspartate antagonist in treatment-resistant major depression. *Arch Gen Psychiatry* 2006;63:856-64.
95. Seeman P, Ko F, Tallerico T. Dopamine receptor contribution to the action of PCP, LSD and ketamine psychotomimetics. *Mol Psychiatry* 2005;10:877-83.
96. Choudary PV, Molnar M, Evans SJ, et al. Altered cortical glutamatergic and GABAergic signal transmission with glial involvement in depression. *Proc Natl Acad Sci U S A* 2005;102:15653-8.
97. Barbon A, Popoli M, La Via L, et al. Regulation of editing and expression of glutamate alpha-amino-propionic-acid (AMPA)/kainate receptors by antidepressant drugs. *Biol Psychiatry* 2006;59:713-20.
98. Brambilla P, Perez J, Barale F, Schettini G, Soares JC. GABAergic dysfunction in mood disorders. *Mol Psychiatry* 2003;8:715, 721-37.
99. Hasler G, Neumeister A, van der Veen JW, et al. Normal prefrontal gamma-aminobutyric acid levels in remitted depressed subjects determined by proton magnetic resonance spectroscopy. *Biol Psychiatry* 2005;58:969-73.
100. Rajkowska G, O'Dwyer G, Teleki Z, Stockmeier CA, Miguel-Hidalgo JJ. GABAergic neurons immunoreactive for calcium binding proteins are reduced in the prefrontal cortex in major depression. *Neuropsychopharmacology* 2007;32:471-82.
101. Lewy AJ, Lefler BJ, Emens JS, Bauer VK. The circadian basis of winter depression. *Proc Natl Acad Sci U S A* 2006;103:7414-9.
102. Lopez-Rodriguez F, Kim J, Poland

- RE. Total sleep deprivation decreases immobility in the forced-swim test. *Neuropsychopharmacology* 2004;29:1105-11.
103. Johansson C, Willeit M, Smedh C, et al. Circadian clock-related polymorphisms in seasonal affective disorder and their relevance to diurnal preference. *Neuropsychopharmacology* 2003;28:734-9.
104. Bunney WE, Bunney BG. Molecular clock genes in man and lower animals: possible implications for circadian abnormalities in depression. *Neuropsychopharmacology* 2000;22:335-45.
105. Einat H, Kronfeld-Schor N, Eilam D. Sand rats see the light: short photoperiod induces a depression-like response in a diurnal rodent. *Behav Brain Res* 2006;173:153-7.
106. Beasley CL, Honer WG, Bergmann K, Falkai P, Lütjohann D, Bayer TA. Reductions in cholesterol and synaptic markers in association cortex in mood disorders. *Bipolar Disord* 2005;7:449-55.
107. Strous RD, Maayan R, Lapidus R, et al. Dehydroepiandrosterone augmentation in the management of negative, depressive, and anxiety symptoms in schizophrenia. *Arch Gen Psychiatry* 2003;60:133-41.
108. Schmidt PJ, Daly RC, Bloch M, et al. Dehydroepiandrosterone monotherapy in midlife-onset major and minor depression. *Arch Gen Psychiatry* 2005;62:154-62.
109. Torregrossa MM, Jutkiewicz EM, Mosberg HI, Balboni G, Watson SJ, Woods JH. Peptidic delta opioid receptor agonists produce antidepressant-like effects in the forced swim test and regulate BDNF mRNA expression in rats. *Brain Res* 2006;1069:172-81.
110. Weber MM, Emrich HM. Current and historical concepts of opiate treatment in psychiatric disorders. *Int Clin Psychopharmacol* 1988;3:255-66.
111. Kennedy SE, Koeppe RA, Young EA, Zubieta JK. Dysregulation of endogenous opioid emotion regulation circuitry in major depression in women. *Arch Gen Psychiatry* 2006;63:1199-208.
112. Janowsky DS, Overstreet DH. Cholinergic-muscarinic dysfunction in mood disorders. In: Soares JC, Young AH, eds. *Bipolar disorders: basic mechanisms and therapeutic implications*. 2nd ed. New York: Informa Healthcare, 2007:67-88.
113. Shytle RD, Silver AA, Lukas RJ, Newman MB, Sheehan DV, Sanberg PR. Nicotinic acetylcholine receptors as targets for antidepressants. *Mol Psychiatry* 2002;7:525-35.
114. Popik P, Kozela E, Krawczyk M. Nicotine and nicotinic receptor antagonists potentiate the antidepressant-like effects of imipramine and citalopram. *Br J Pharmacol* 2003;139:1196-202.
115. Goshen I, Kreisel T, Ben-Menachem-Zidon O, et al. Brain interleukin-1 mediates chronic stress-induced depression in mice via adrenocortical activation and hippocampal neurogenesis suppression. *Mol Psychiatry* (in press).
116. Dantzer R, Wollman E, Vitkovic L, Yirmiya R. Cytokines and depression: fortuitous or causative association? *Mol Psychiatry* 1999;4:328-32.
117. Spalletta G, Bossù P, Ciaramella A, Bria P, Caltagirone C, Robinson RG. The etiology of poststroke depression: a review of the literature and a new hypothesis involving inflammatory cytokines. *Mol Psychiatry* 2006;11:984-91.
118. Sullivan GM, Mann JJ, Oquendo MA, Lo ES, Cooper TB, Gorman JM. Low cerebrospinal fluid transthyretin levels in depression: correlations with suicidal ideation and low serotonin function. *Biol Psychiatry* 2006;60:500-6.
119. Bauer M, Heinz A, Whybrow PC. Thyroid hormones, serotonin and mood: of synergy and significance in the adult brain. *Mol Psychiatry* 2002;7:140-56.
120. Desouza LA, Ladiwala U, Daniel SM, Agashe S, Vaidya RA, Vaidya VA. Thyroid hormone regulates hippocampal neurogenesis in the adult rat brain. *Mol Cell Neurosci* 2005;29:414-26.
121. Cooper-Kazaz R, Apter JT, Cohen R, et al. Combined treatment with sertraline and liothyronine in major depression: a randomized, double-blind, placebo-controlled trial. *Arch Gen Psychiatry* 2007;64:679-88.
122. George MS, Belmaker RH, eds. *Transcranial magnetic stimulation in clinical psychiatry*. Washington, DC: American Psychiatric Publishing, 2007.
123. Mayberg HS, Lozano AM, Voon V, et al. Deep brain stimulation for treatment-resistant depression. *Neuron* 2005;45:651-60.
124. Milak MS, Parsey RV, Keilp J, Oquendo MA, Malone KM, Mann JJ. Neuroanatomic correlates of psychopathologic components of major depressive disorder. *Arch Gen Psychiatry* 2005;62:397-408.
125. Pizzagalli DA, Oakes TR, Fox AS, et al. Functional but not structural subgenual prefrontal cortex abnormalities in melancholia. *Mol Psychiatry* 2004;9:325,393-405.
126. Hastings RS, Parsey RV, Oquendo MA, Arango V, Mann JJ. Volumetric analysis of the prefrontal cortex, amygdala, and hippocampus in major depression. *Neuropsychopharmacology* 2004;29:952-9.
127. Airan RD, Meltzer LA, Roy M, Gong Y, Chen H, Deisseroth K. High-speed imaging reveals neurophysiological links to behavior in an animal model of depression. *Science* 2007;317:819-23.
128. Potter GG, Blackwell AD, McQuoid DR, et al. Prefrontal white matter lesions and prefrontal task impersistence in depressed and nondepressed elders. *Neuropsychopharmacology* 2007;32:2135-42.
129. Kendler KS, Bulik CM, Silberg J, Hettema JM, Myers J, Prescott CA. Childhood sexual abuse and adult psychiatric and substance use disorders in women: an epidemiological and cotwin control analysis. *Arch Gen Psychiatry* 2000;57:953-9.

Copyright © 2008 Massachusetts Medical Society.

#### POSTING PRESENTATIONS AT MEDICAL MEETINGS ON THE INTERNET

Posting an audio recording of an oral presentation at a medical meeting on the Internet, with selected slides from the presentation, will not be considered prior publication. This will allow students and physicians who are unable to attend the meeting to hear the presentation and view the slides. If there are any questions about this policy, authors should feel free to call the *Journal's* Editorial Offices.